

## HUSQVARNA T536Li XP®

For professional users who want a lightweight, extremely easy-to-use top handle chainsaw with high performance. Perfect for arborists. A robust chainsaw with excellent ergonomics, high performance and high chainspeed.



### One battery fits all

The battery pack is designed for demanding, long lasting professional use. It fits all our handheld machines, which allows you to quickly switch the same battery between a trimmer, blower, chainsaw and hedge trimmer and keep working.

### Petrol performance

The battery back provides an equally high power, reliable operation and long lifetime as petrol-driven machines – without any direct emissions. Also, you get as much done on a single charge, as you would manage on one tank of petrol.

### Efficient brushless motor

Our in-house developed, advanced brushless motor is 25 % more efficient than a standard brush motor. This means that the motor provides a high and consistent torque.



### Gear up for nonstop operation

Our battery accessories allow you to carry on and get the job done as quickly and efficiently as possible.



## FEATURES

- In-house developed brushless motor provides a high and consistent torque.
- Petrol performance
- One battery fits all
- Gear up for nonstop operation
- Choose savE™ mode for maximum runtime
- The key pad is very easy to operate.

Technical specifications	
<b>BATTERY</b>	
Battery type	Li-Ion
Battery voltage	36 V
Cells per battery	20
Motor type	BLDC (brushless)
<b>DIMENSIONS</b>	
Product size height	23 cm
Product size length	26.5 cm
Product size width	21.5 cm
Weight (excl. battery and cutting equipment)	2.4 kg
<b>EQUIPMENT</b>	
Chain speed at max power	20 m/s
Pitch	3/8"
Recommended bar length, max	35 cm
Recommended bar length, min	25 cm
Sprocket type	Spur 6
<b>LUBRICANT</b>	
Oil pump capacity Max	8 ml/min
Oil pump type	Automatic
Oil tank volume	0.2 l
<b>SOUND AND NOISE</b>	
Sound power level, guaranteed (LWA)	106 dB(A)
Sound power level, measured	104 dB(A)
Sound pressure level at operators ear	93 dB(A)
<b>VIBRATION</b>	
Equivalent vibration level (ahv, eq) front handle	2 m/s <sup>2</sup>
Equivalent vibration level (ahv, eq) rear handle	2.4 m/s <sup>2</sup>
Material content, steel	0.561 kg
Material content, aluminium	0.065 kg
Material content, ABS	0.672 kg
Material content, other plastics	0.008 kg
Material content, PA	0.921 kg
Material content, PBT	0.007 kg
Material content, PE	0.133 kg
Material content, PP	0.075 kg
Material content, POM	0.02 kg
Material content, nitrile rubber	0.017 kg
Material content, cardboard	0.9 kg
Material content, polymerfoam	0.001 kg

## ACCESSORIES



HUSQVARNA BATTERY BLI100  
967 09 18-01



HUSQVARNA BATTERY BLI200  
967 09 19-01



HUSQVARNA BATTERY BLI150  
967 24 19-01



HUSQVARNA BLI520X  
966 77 59-01



HUSQVARNA BLI940X  
966 77 60-01



HUSQVARNA CHARGER QC330  
967 09 14-01



HUSQVARNA CHARGER QC330  
967 09 14-02



HUSQVARNA CHARGER QC330  
967 09 14-03



HUSQVARNA CHARGER QC330  
967 09 14-04



HUSQVARNA CHARGER QC330  
967 09 14-05



HUSQVARNA CHARGER QC330  
967 09 14-06

HUSQVARNA CHARGER QC500  
967 09 15-01

HUSQVARNA CHARGER QC500  
967 09 15-02

HUSQVARNA CHARGER QC500  
967 09 15-03

HUSQVARNA CHARGER QC500  
967 09 15-04

HUSQVARNA CHARGER QC500  
967 09 15-05



HUSQVARNA CHARGER QC500  
967 09 15-06

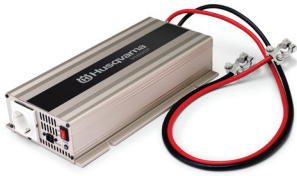
HUSQVARNA CHARGER QC80F  
967 62 83-01



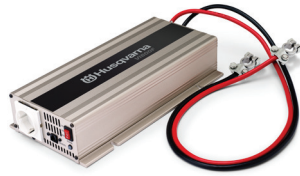
HUSQVARNA INVERTER VI600F  
967 62 85-01



HUSQVARNA INVERTER VI600F  
967 62 85-02



HUSQVARNA INVERTER VI600F  
967 62 85-03



HUSQVARNA INVERTER VI600F  
967 62 85-04



HUSQVARNA BATTERY BAG  
585 37 18-01



HUSQVARNA BATTERY BOX S  
585 42 87-01



CHAINSAW BAG  
576 85 91-01

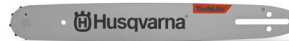
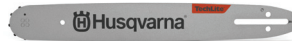


SAW CHAIN H00 1/4" 1,3 MM  
501 84 40-60



SAW CHAIN H00 1/4" 1,3 MM  
501 84 40-68

PIXEL 3/8" MINI LAMINATED  
SMALL BAR MOUNT  
501 95 95-45



PIXEL 3/8" MINI LAMINATED  
SMALL BAR MOUNT  
501 95 95-52

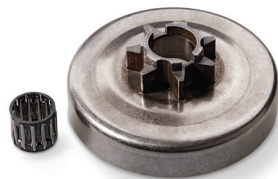
PIXEL 3/8" MINI TECHLITE SMALL  
BAR MOUNT  
578 10 68-45

PIXEL 3/8" MINI TECHLITE SMALL  
BAR MOUNT  
578 10 68-52

1/4" CARVING SMALL BAR MOUNT  
587 39 44-60



1/4" CARVING SMALL BAR MOUNT  
587 39 44-68



CHAIN SAW HOOK  
580 80 03-01



CHAIN SAW HOOK  
577 43 79-01

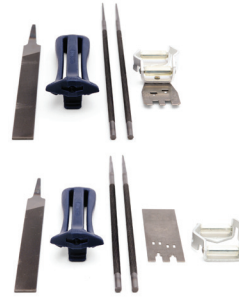




CHAIN SAW STROP  
577 43 80-01



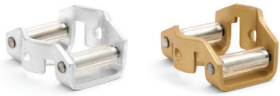
EYELET  
578 07 71-01



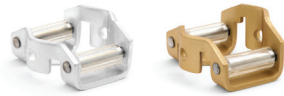
FILE KITS  
580 68 75-01



FILE GAUGE 3/8 HOBBY  
505 69 81-03



FILE GAUGES  
579 55 88-01



FILE GAUGES  
505 69 81-18



FILE GAUGE  
580 68 74-01



INTENSIVE CUT  
510 09 57-01



INTENSIVE CUT  
510 09 57-02



FLAT FILES  
505 69 81-60



ROUND FILES  
505 69 81-61



HUSQVARNA BEARING GREASE  
503 62 12-01