



## HUSQVARNA AUTOMOWER® 450X

Top of the range model from the world leaders in robotic mowing. Smart enough to negotiate the challenges of large and complex lawns – like multiple narrow passages, obstacles, tough terrain and slopes up to 45%. GPS-assisted navigation and a host of features including Automower® Connect make it the intelligent way to keep your lawn green, healthy and perfectly mowed. The Automower® Connect app keeps you in control: track, interact and stay updated at the touch of a screen, wherever you are in the world.



### Remote object detection

Built-in sensors using ultrasonic technology helps the mower to detect objects, lowers the speed and avoid hard collisions.

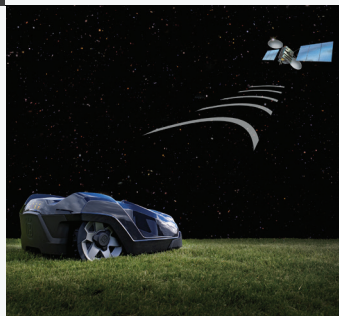


### Automower® Connect

Automower® Connect gives you full control of the mower right in your smartphone. You can easily send start, stop and park commands, check and adjust settings. If required also receive alarms and track your mower's position in case of theft – wherever you are. >10 years mobile data contract included. Standard on X-line, optional for all 300-400 series.

### GPS-assisted navigation - PATENTED

An onboard GPS system creates a map of the garden, including where the boundary and guide wires are installed. Husqvarna Automower® will then register which parts of the garden it has covered and adjusts its mowing pattern accordingly. This will ensure optimized lawn coverage and an excellent cutting result.



### Automatic charging

When Automower® needs more power, it finds its own way back to the charging station.



## FEATURES

- An onboard GPS system creates a map and register which parts of the garden it has covered and adjusts its mowing pattern accordingly.
- Automower® Connect gives you full control of the mower right in your smartphone. Long distance connectivity including geofence and notification functionality.
- Built-in sensors helps the mower to avoid hard collisions by detection of objects.
- The mower automatically finds its charging station
- No emissions
- Personalise the mower via a Settings panel

Technical specifications	
<b>BATTERY</b>	
Battery capacity	10.4 Ah
Battery voltage	18 V
Charging current	7.0 A
Mean energy consumption at maximum use	23 kWh
Power consumption during cutting	35 W
Typical charging time	75 min
Typical mow time on one charge	260 min
<b>CAPACITY</b>	
Charging system	Automatic
Maximum incline within the working area	24°
Working area capacity (±20)	5000 m <sup>2</sup>
Follow boundary wire	Yes
Follow guide wire	3
Home signal	Yes
Search system	Pentasearch
<b>CUTTING DECK</b>	
Cutting system	3 pivoting razor blades
Cutting width	24 cm
Cutting width	9.45 in
<b>DIMENSIONS</b>	
Weight	13.9 kg
<b>EQUIPMENT</b>	
Alarm	Yes
Extra blades	9 pcs
Handle type	Integrated
Installation lock	Yes
Keypad	19 buttons
Lift sensor	Yes
Loop wire	0 m
PIN code	Yes
Staples	0 pcs
Tilt sensor	Yes
Time lock	Yes
Timer	Yes
Ultrasonic sensor	Yes
Wheel threads	Coarse
Extra blades	9 pcs
Loop wire	0 m
Staples	0 pcs
Blade motor type	3- phase brushless DC motor
Drive motor type	Ultrasilent drive, Brushless DC motor
Body	Terblend plastic
Handle type	Integrated
Keypad	19 buttons
Software update possibility	Yes
Timer	Yes
Wheel threads	Coarse
Area capacity per hour	210 m <sup>2</sup>
Charging system	Automatic
Maximum incline at boundary wire	15 %
Maximum incline within the working area	24°
Navigation system	Irregular
Alarm	Yes
Installation lock	Yes
Lift sensor	Yes
PIN code	Yes
Tilt sensor	Yes
Time lock	Yes

Technical specifications

SOUND AND NOISE

Sound level Guaranteed

59 dB(A)

Sound level Measured

58 dB(A)

PXM\_SPAREPARTS



SPLICER  
577 86 47-01



LOOP WIRE  
577 86 43-01



ROUGH TERRAIN KIT  
581 88 97-02



CONNECTOR  
577 86 48-01



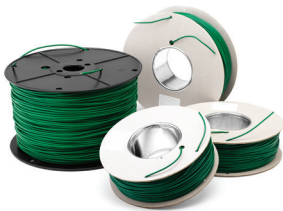
LOOP WIRE  
580 66 20-01



LOOP WIRE  
580 66 20-02

535 07 57-03

574 44 98-01



LOOP WIRE  
577 86 43-02



STAPLES  
577 86 42-01



LOOP WIRE  
522 91 41-01



CONNECTOR  
535 12 90-01